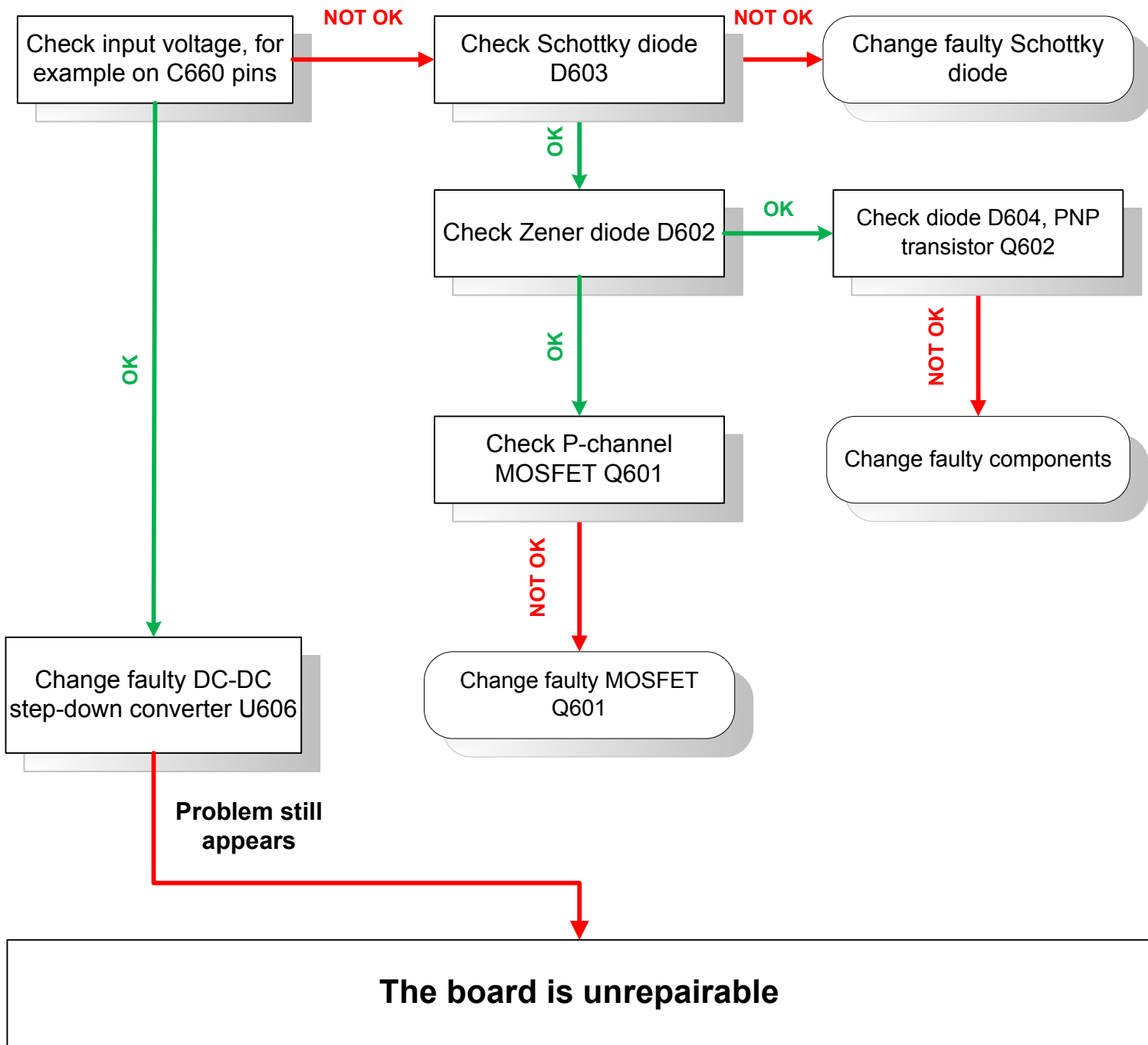


TroubleShooting for RB711-5Hn-M (MMCXr2)

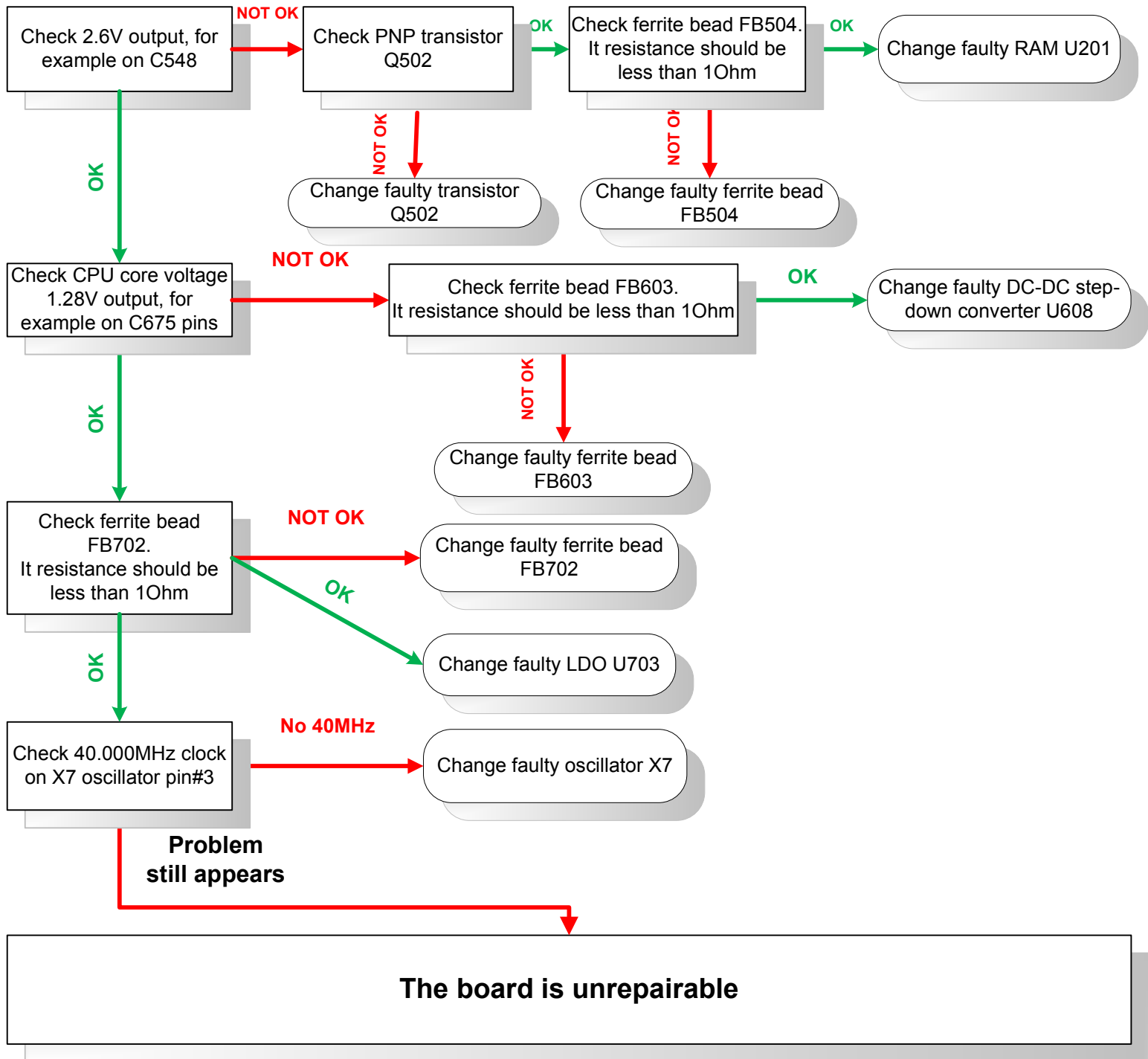
These repair instructions are for **NON WARRANTY** repairs only!

Please make visual inspection for signs of corrosion or mechanical damages before starting.

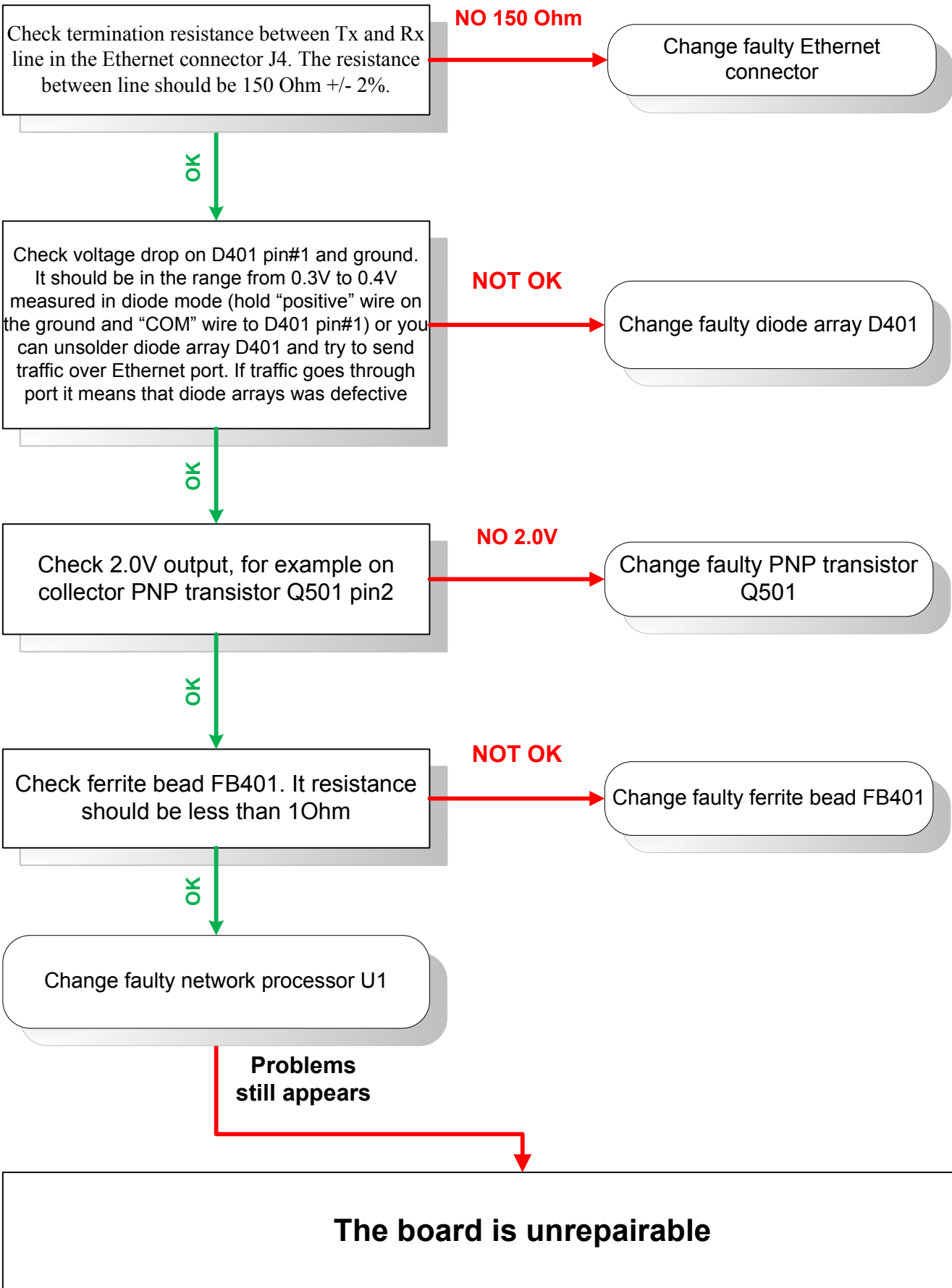
No power, blue LED is not lit



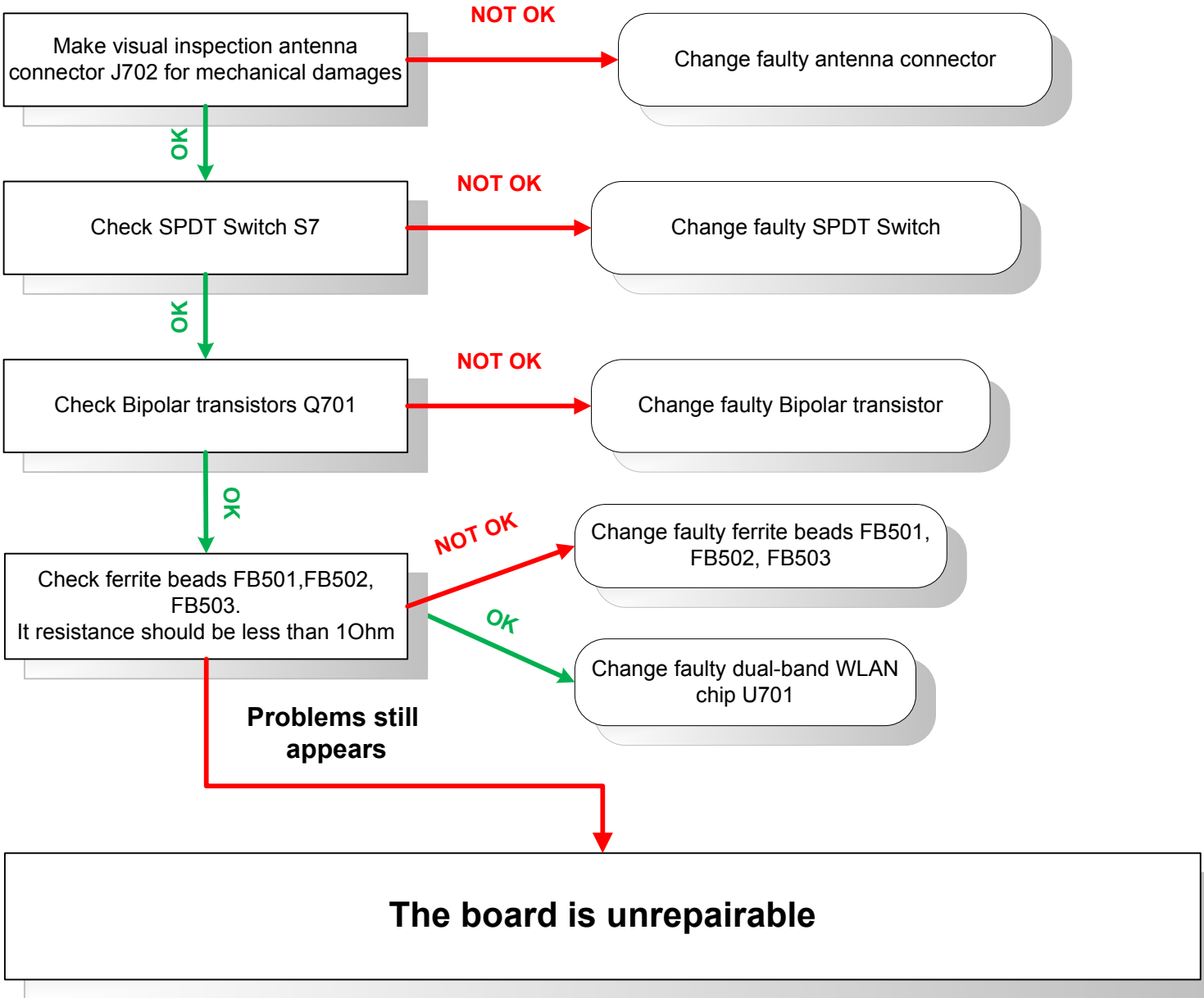
RB does not boot, green and blue LEDs are lit



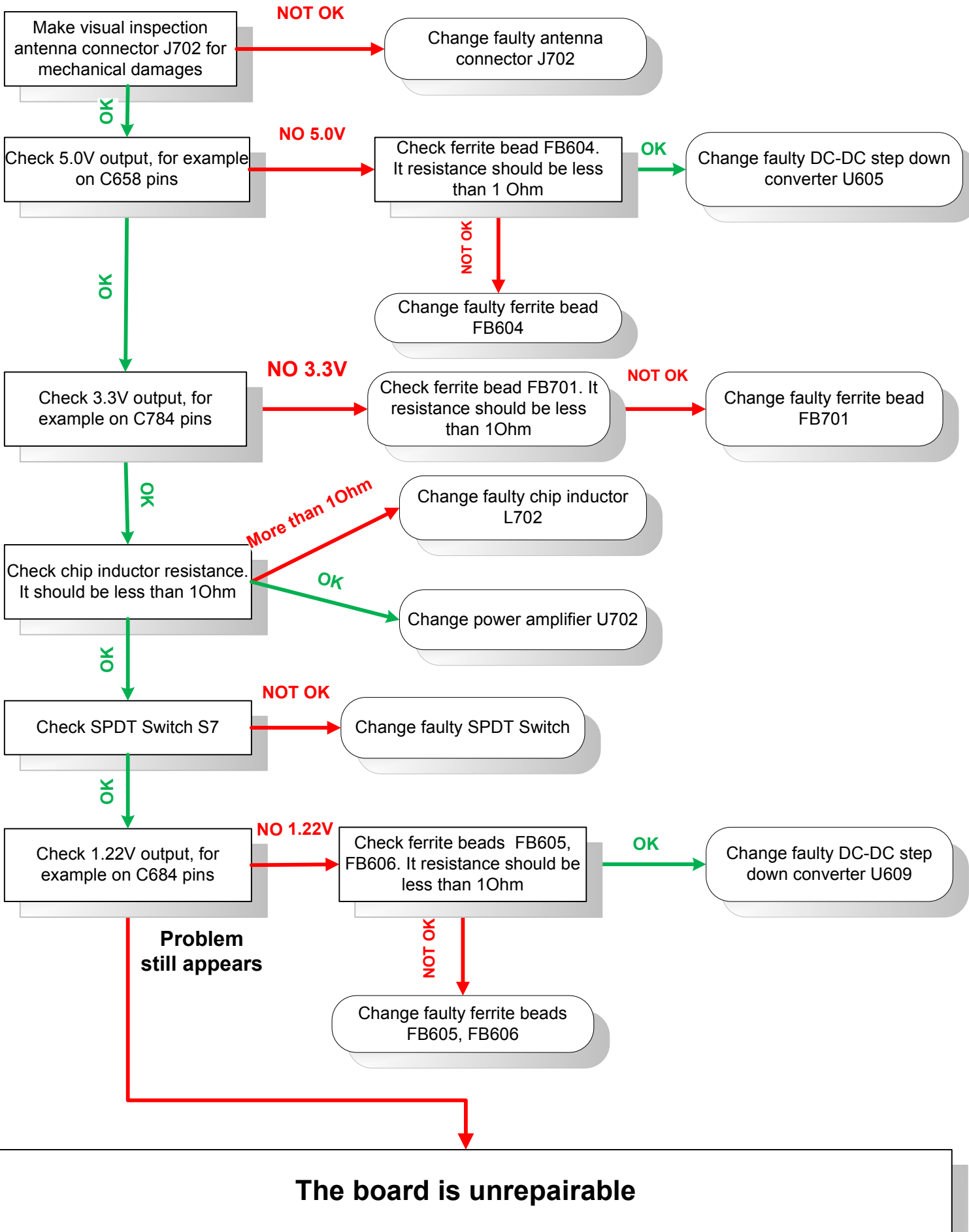
Ethernet does not work, drops ping packets



Receive does not work



Transmit does not work

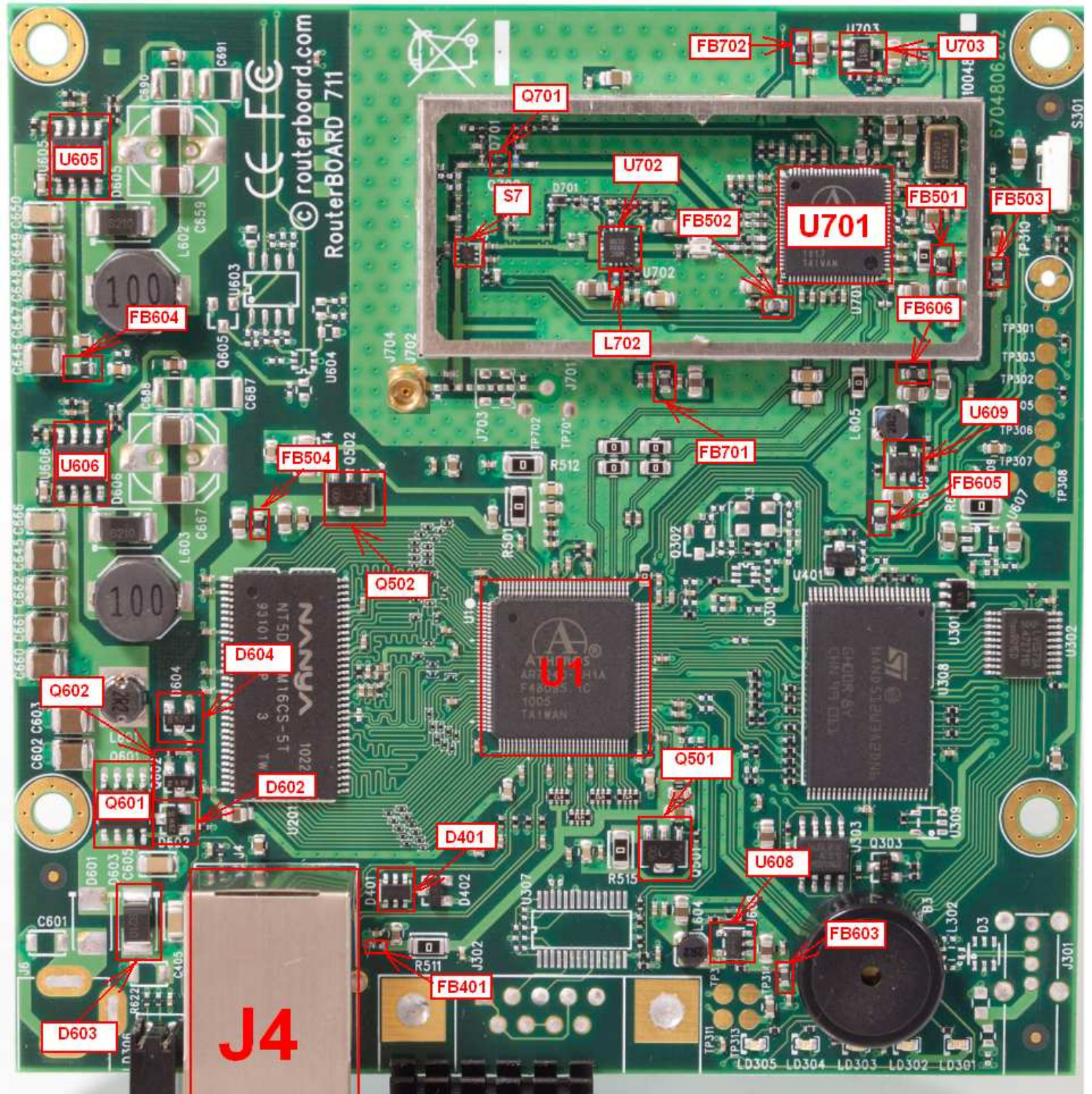


| Reference number | Part Number | Manufacturer | Description |
|--|---------------------|-------------------------------------|--|
| D401 | AOZ8000CIL | Alpha & Omega | IC TVS ARRAY LOW-CAP SOT23-6 |
| D602 | BZX84C10/SOT23-GP | SINYORK CO., LTD. | Diode Zener BZX84C 10V 6% 410mW SOT23 |
| D603 | FM2100/SMA-GP | SINYORK CO., LTD. | Diode Schottky FM2100 Vf=0.85V Vr=100V If=2A SMA |
| D604 | BZX84-B30,215 | NXP Semiconductors | Diode Zener BZX84B 30V 2% 250mW SOT23 |
| FB401 | BLM15AG121SN1D | Murata manufacturing Co. | Ferr Chip Beads 120 Ohm 500mA, 0402, FB120 |
| FB501, FB502, FB503, FB504, FB701, FB702 | BLM18EG221SN1D | Murata manufacturing Co. | Ferr Bead 220 Ohm, 2A, 0603 |
| FB603, FB605, FB606 | BLM18PG331SN1D | Murata manufacturing Co. | Ferr Chip Beads 330 Ohm 1200mA, 0603 |
| J4 | RTF-113BAH3A | U.D. Electronic Corp. | RJ45 10/100MHz magn LEDs and direct POE output |
| J702 | MCI-9605-10 | Match Connector Industrial Co. LTD | MMCX Female PCB Mount, 0.5mm stand off |
| Q501, Q502 | KTA1663-Y-RTF/P | KEC Corporation, LTD | PNP transistor Ic= -1.5A, Vce= -30V, SOT-89 |
| Q601 | AO4441 | Alpha & Omega | P-Ch MOSFET -60V -4A 100mOhm SO-8 |
| Q602 | BC856B,215 | Philips AG | Small Sign PNP 250mW SOT-23 Transistor |
| Q701 | BFR740L3RHE6327 | Infineon Technologies Taiwan Co Ltd | SiGe Heterostructure Bipolar Transistor, DC-6GHz |
| L702 | KHF0402H3N3SA | Bao Cheng Electronics Co.,Ltd., | Chip Inductor 3.3nH ±0.3nH 390mA 0402 |
| S7 | GW2163 | Qwave Technology Co., Ltd. | GaAs MMIC SPDT Switch,2.4GHz&6GHz, 2.5-5.3V |
| U1 | AR7240-AH1A | Atheros Technology Ltd. | Network processor 400MHz, DDR1/2, USB, PCI-E, 5x 10/100 PHY LQFP128-EP |
| U201 | NT5DS16M16CS-5T | NANYA TECHNOLOGY CORPORATION | DDR SDRAM 256Mbit DDR400 16M x 16bit TSOP-66 |
| U605, U606 | LSP5502SAC | Lite-On Semiconductor corporation | DC-DC Step-down converter 4.5-30V input 2A output, SO8 |
| U608, U609 | RT8025GJ5 | Richtek Technology Corporation | 1.25MHz, 400mA (works with higher load). PWM Step-Down DC/DC converter TSOT-23-5 |
| U701 | AR9280-AL1A | Atheros Technology Ltd. | 802.11n 2.4/5GHz 2x2 MIMO MAC,BB,Radio WLAN IC, PCIe |
| U702 | LX5530LQ-TR | Microsemi Corporate | InGaP HBT 4.5-6.0 GHz Power Amplifier |
| U703 | APU1205Y5-HF | Advanced Power Electronics Corp. | 0.3A, ADJ LDO, SOT23-5 |
| X7 | NAOH40.000-G18C-CK3 | Atheros Technology Ltd. | SMD OSC 40MHZ 1.8V 10ppm at 25C, 10ppm(-20~+70c |

When you order components for repairing boards from our sales, please, write components reference number not a part number

RB711-5Hn-M

Reference picture



RB711-5Hn-M

Output Voltage picture

