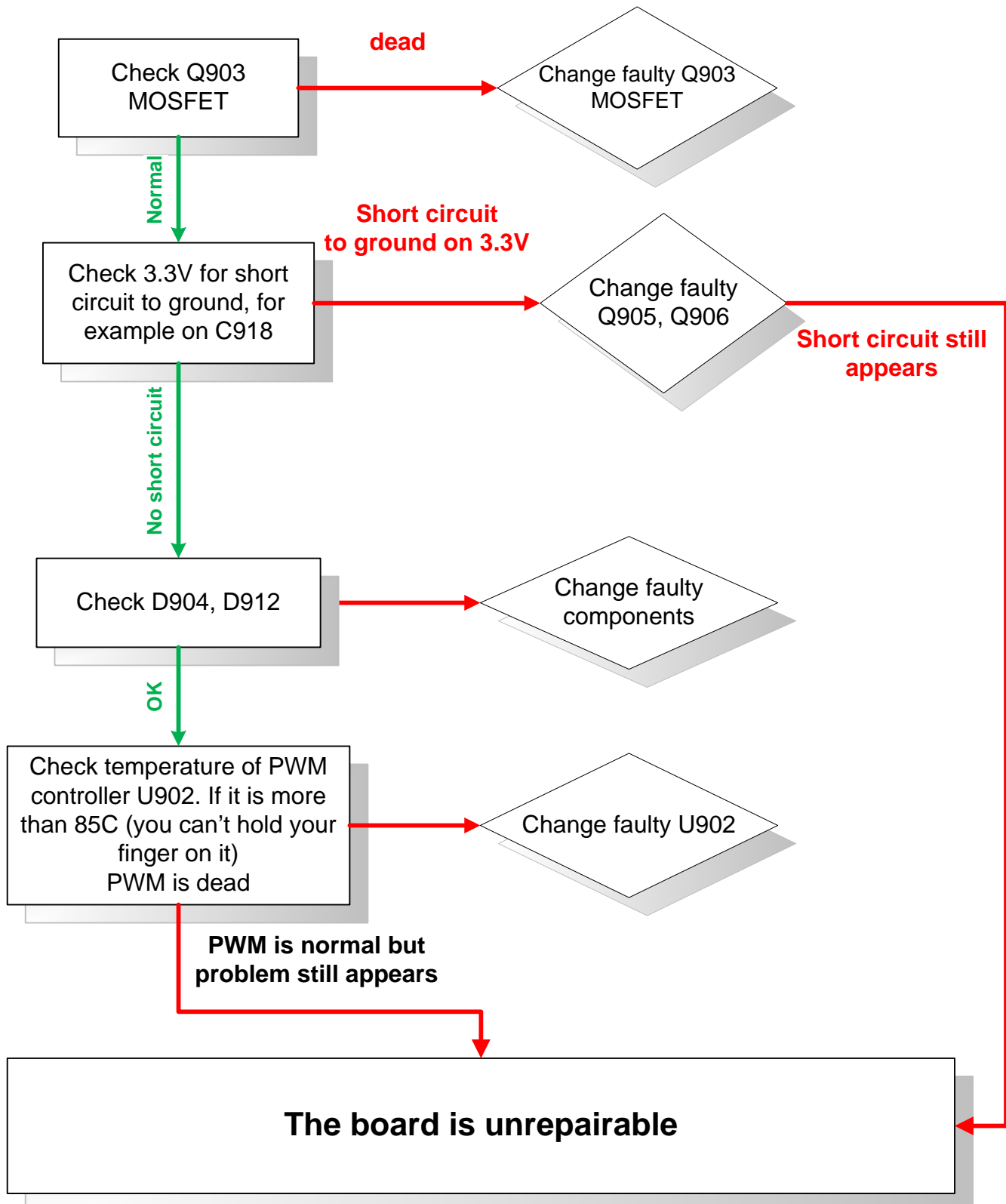


RB600 Trouble Shooting

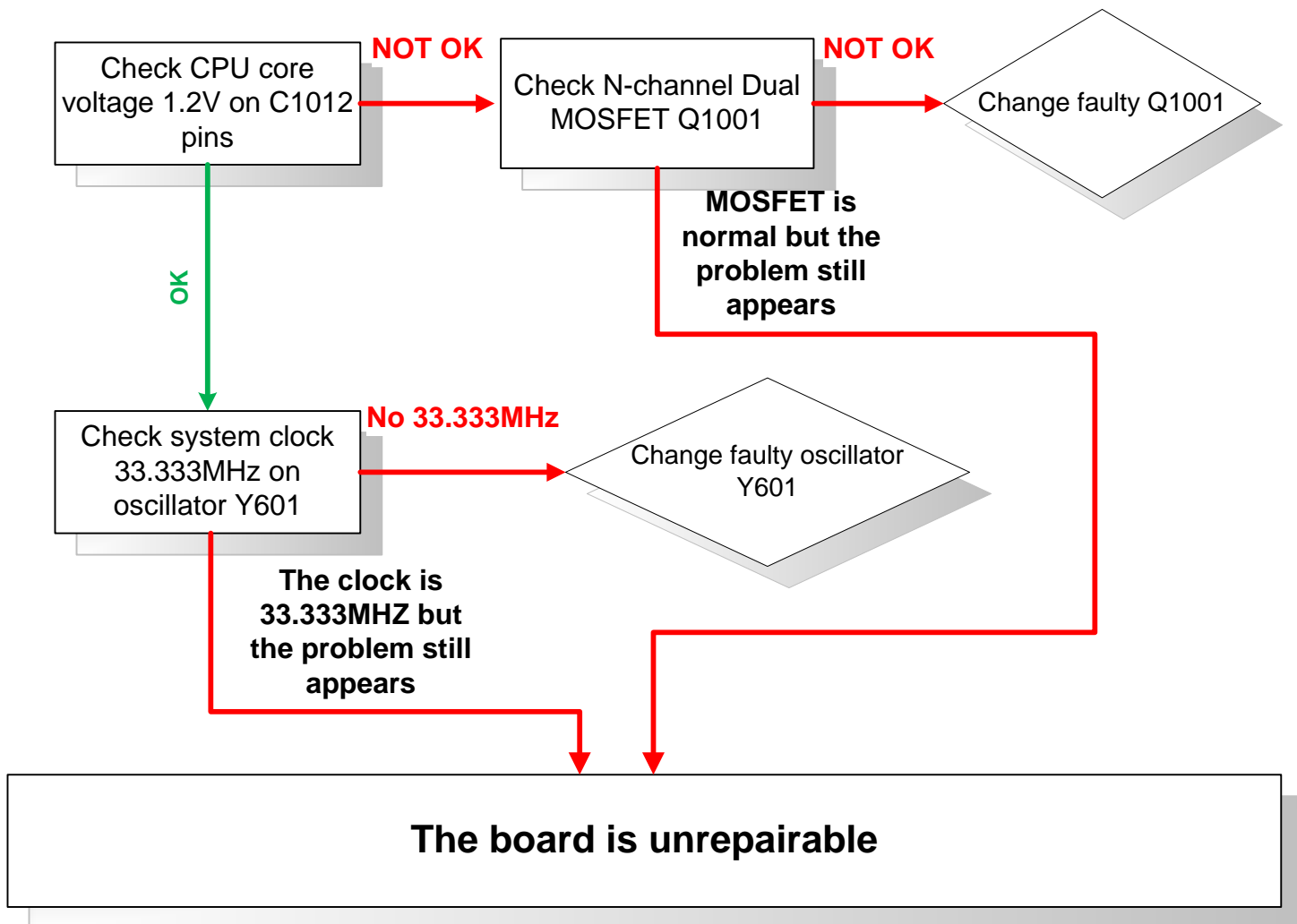
These repair instructions are for **NON WARRANTY** repairs only!

Please make visual inspection for signs of corrosion or mechanical damages before starting.

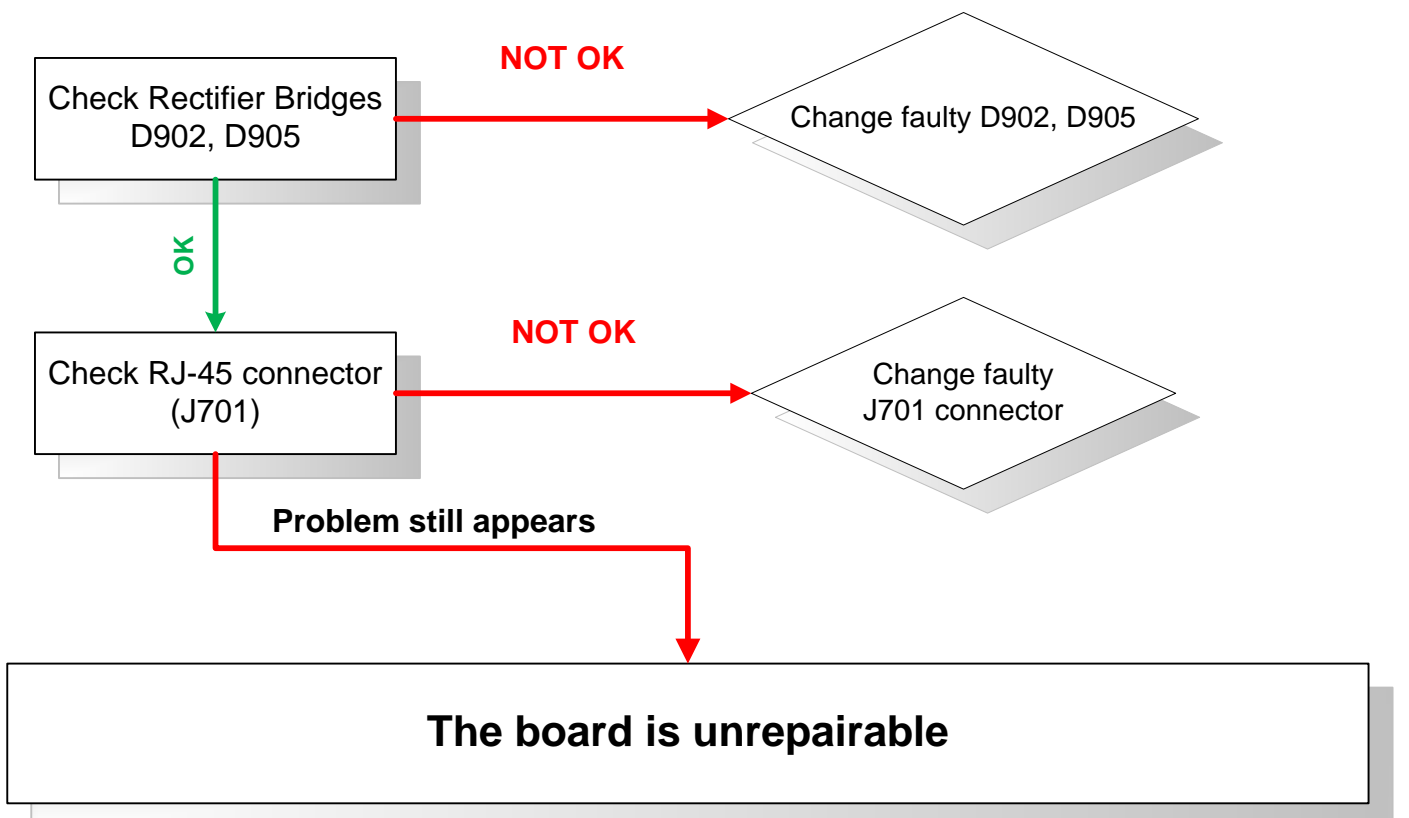
No power, blue LED doesn't shine



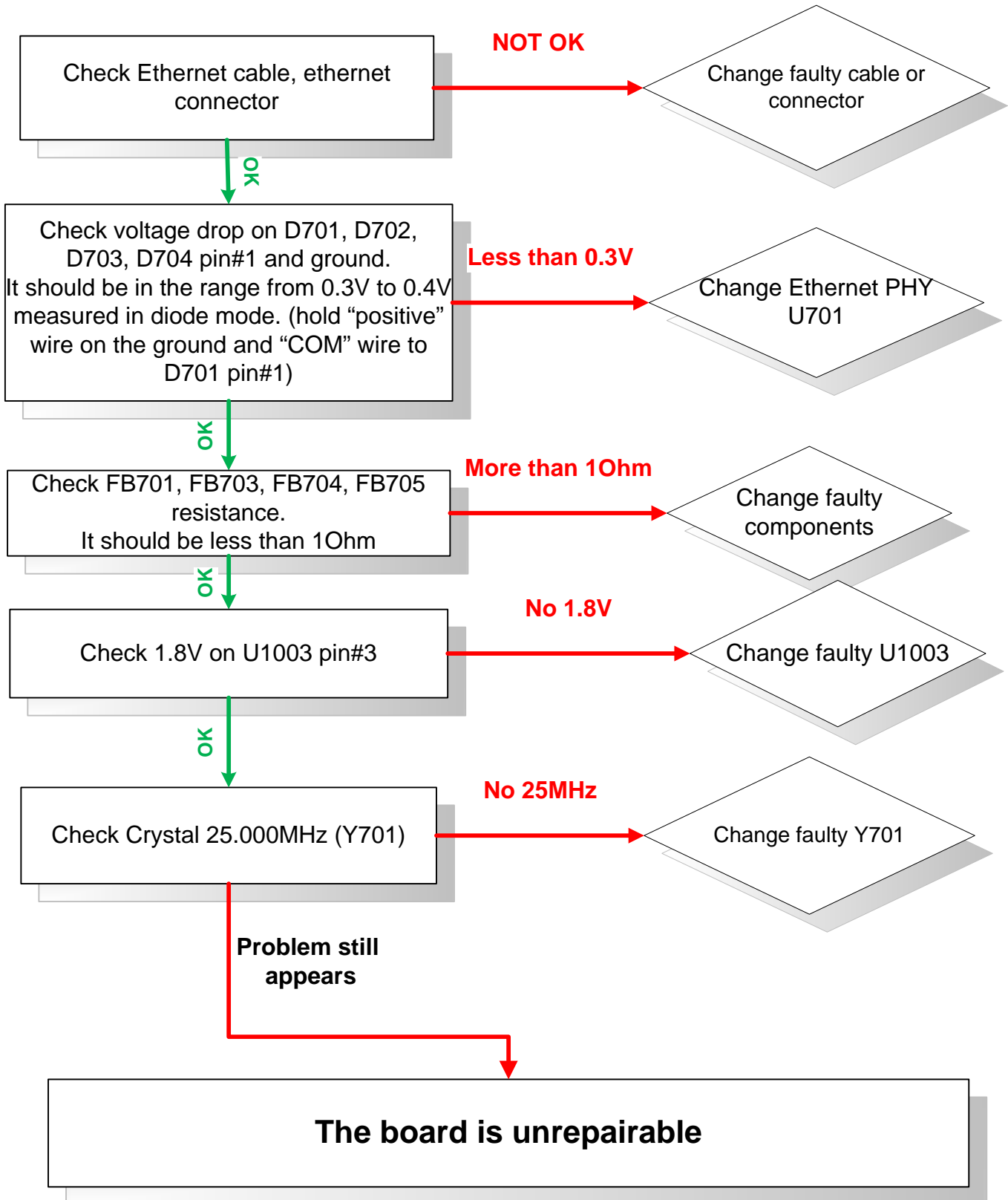
Doesn't boot, blue LED is ON



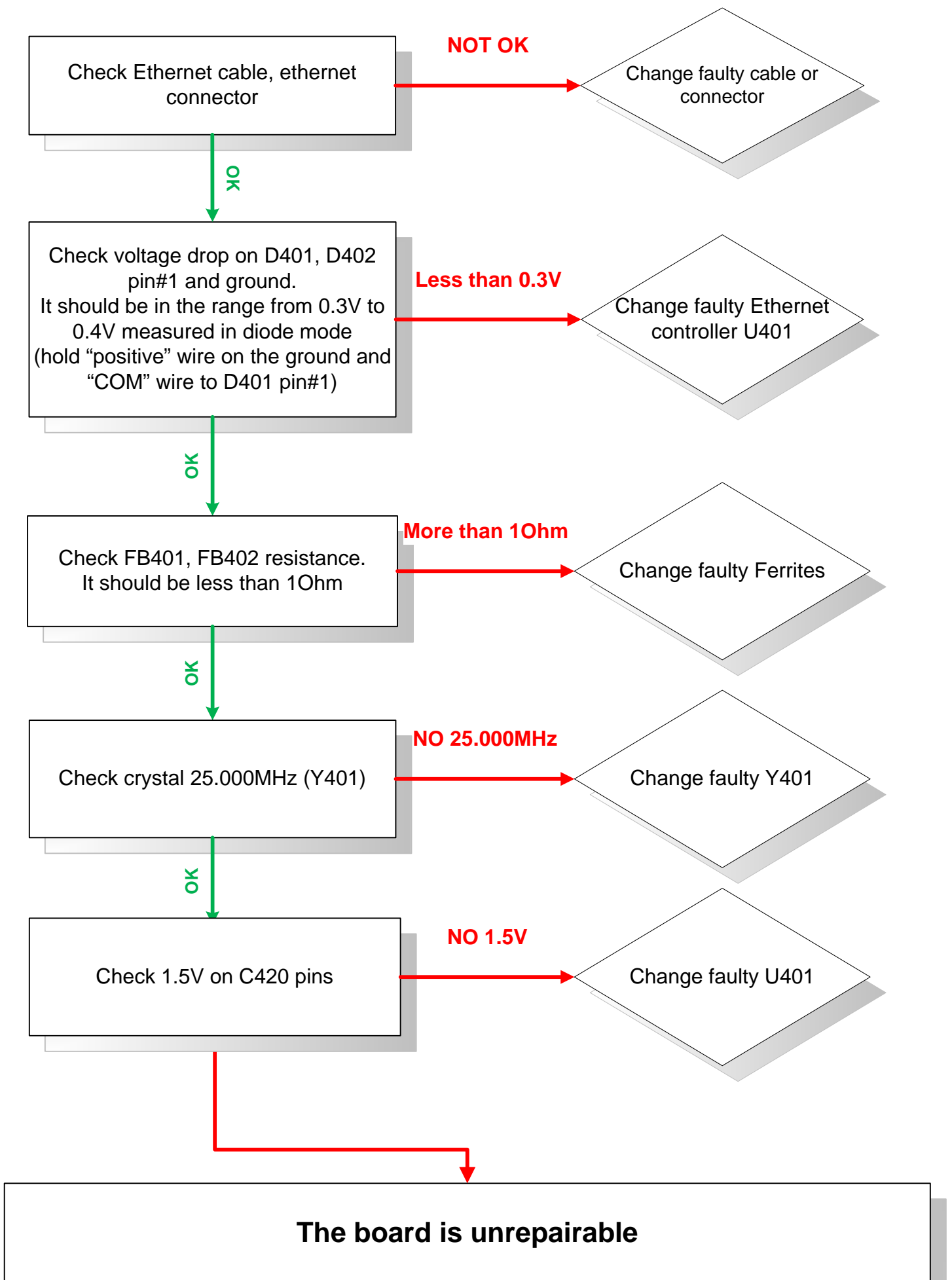
PoE doesn't work



Ethernet1 or Ethernet2 doesn't work, drops ping packets



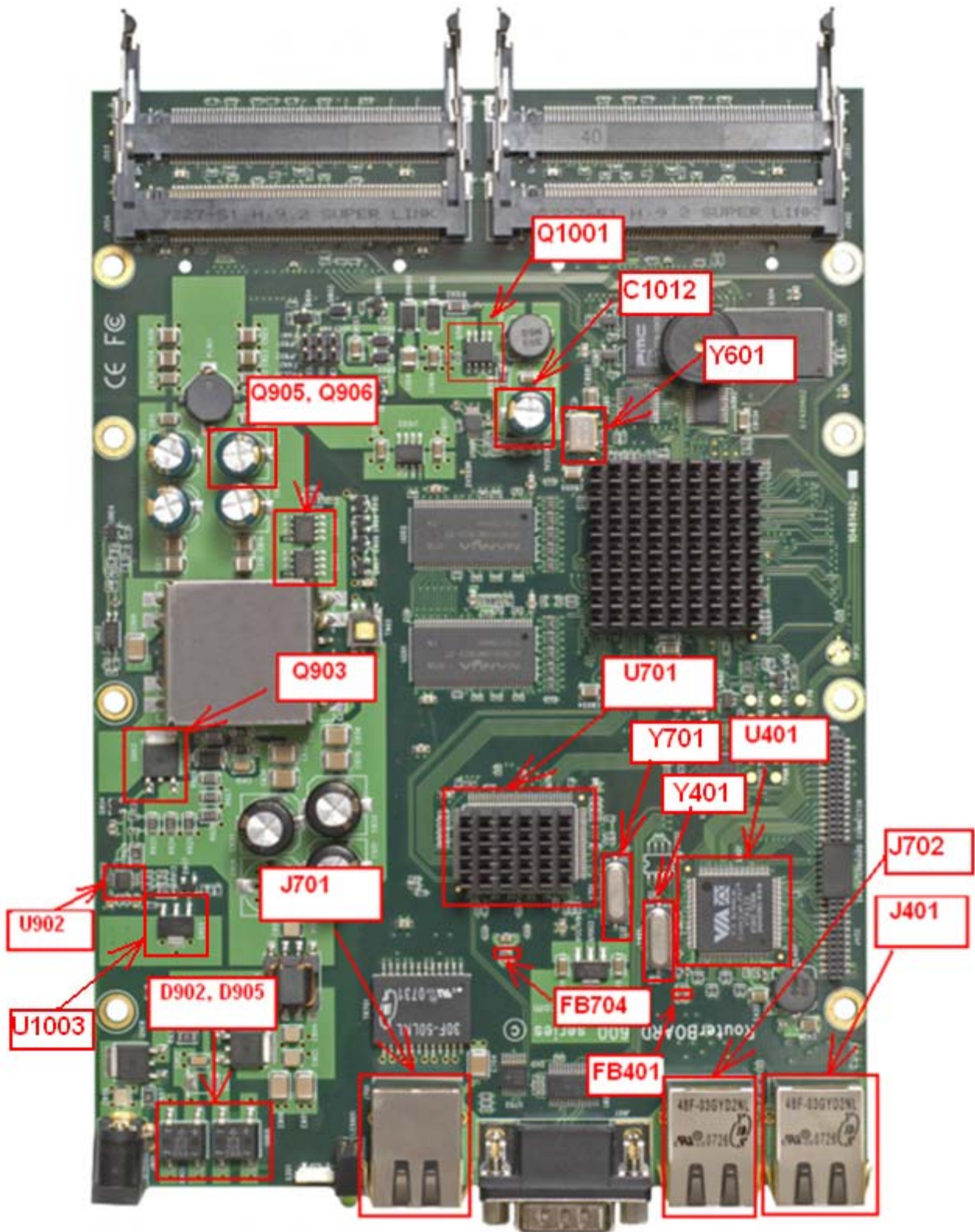
Ethernet3 doesn't work, drops ping packets

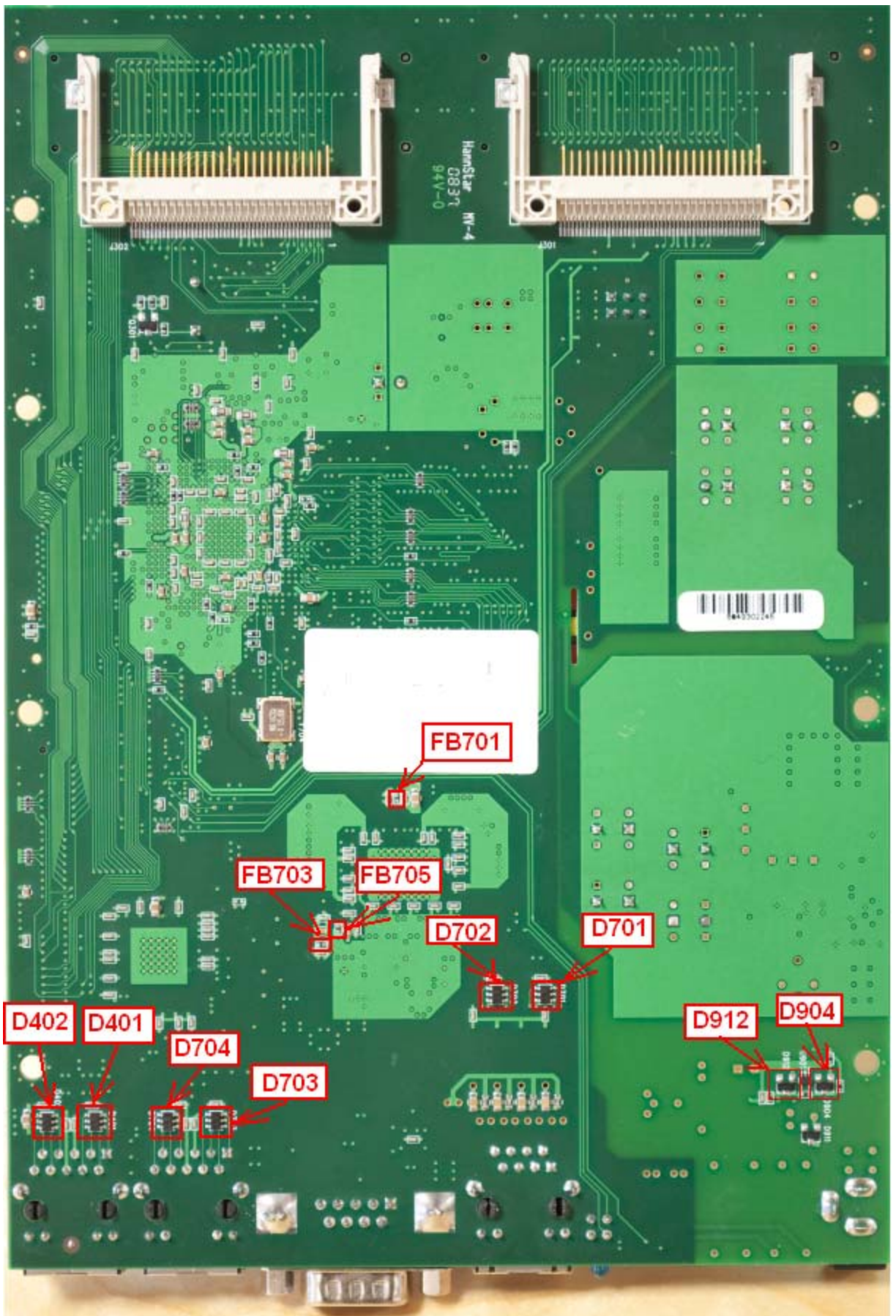


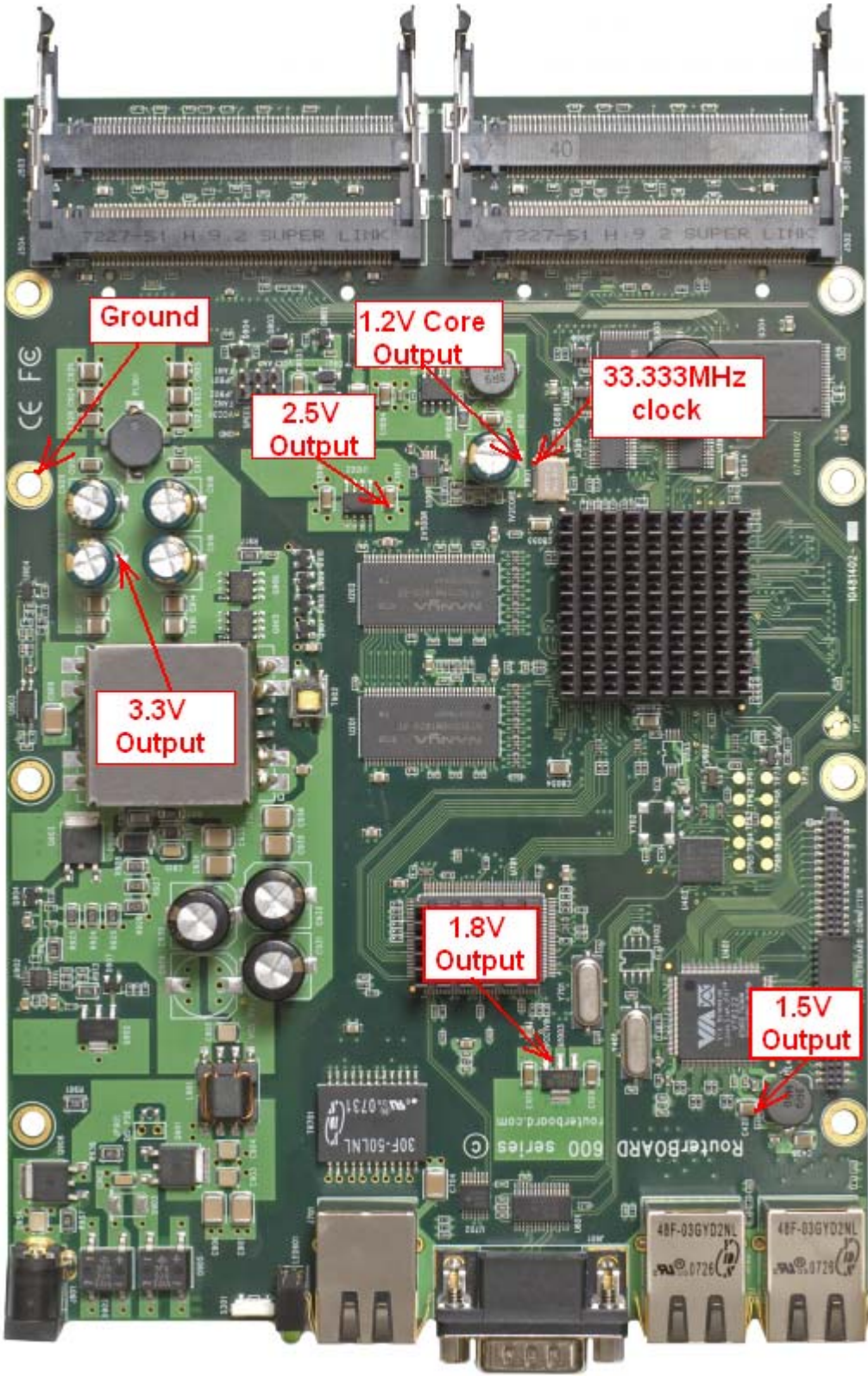
Reference number	Part Number	Manufacturer	Description
D701, D702, D703, D704, D401, D402	TPD4S009DBVR	Texas Instruments	Diode Array with Zener, SOT23-6
D902, D905	DF02SA-E3/77	Vishay Intertechnology	Rectifier Bridge 1A, 200V, DFS
FB401, FB701	BLM15PD121SN1D	Murata manufacturing Co.	Ferr Chip Beads 120 Ohm $\pm 25\%$, 1300mA, 0402
FB402, FB703, FB704, FB705	BLM15AG121SN1D	Murata manufacturing	Ferr Chip Beads 120 Ohm 500mA, 0402
J401, J702	ARB-1FAK-F235-B	TARA ELECTRONICS CO.	RJ45 Ethernet connector 10/100/1000 magnetics(Gigabit), LEDs(G/Y)
J701	8108S-B014	Powerway Electronics Co.	RJ45, shield., RA, G+Y LEDs,TAP DWN, POW
R703, R704, R705, R706	RC0603FR-0775RL	Yageo Corporation	Resistor 75Ohm, 1%, 0603
Q903	FDD3682	Fairchild Semiconductor	N-channel MOSFET, 100V, 32A, 36mOHM
Q905, Q906	AP9985GM	Advanced Power Electronics Corp.	N-channel MOSFET, 40V, 10A, 15mOhm, SO-8
Q1001	AP9928GEM	Advanced Power Electronics Corp.	Dual MOSFET N-channel, 7.3A, 20V, 23mOhm
U401	VT6122	VIA TECHNOLOGIES	Gigabit Ethernet Controller
U701	RTL8212-GR	Realtek Semiconductor Corp.	Integrated 10/100/1000 Single/Dual Gigabit Ethernet Transceiver
U902	LM5020MM-1	NATIONAL SEMICONDUCTOR	Power Controller MSOP10
U1003	APU1206K-18	Advanced Power Electronics Corp.	1A, 1.8V LDO
Y401, Y701	NXE25.000AC20F-AHF	NSK Jenjaan Quartek Corporation	25Mhz Crystal
Y601	NAOD33.333-C3C	NSK Jenjaan Quartek Corporation	33.333MHz Crystal oscillator, 7*5, +/-30PPM

When you order components for repairing router boards from our sales, please, write components reference number not a part number.

RB600 Reference picture







Ground

1.2V Core Output

33.333MHz clock

2.5V Output

3.3V Output

1.8V Output

1.5V Output